



GAT MONTHLY MEMBERSHIP PROGRESS REPORT

Results as of: 3/31/2022

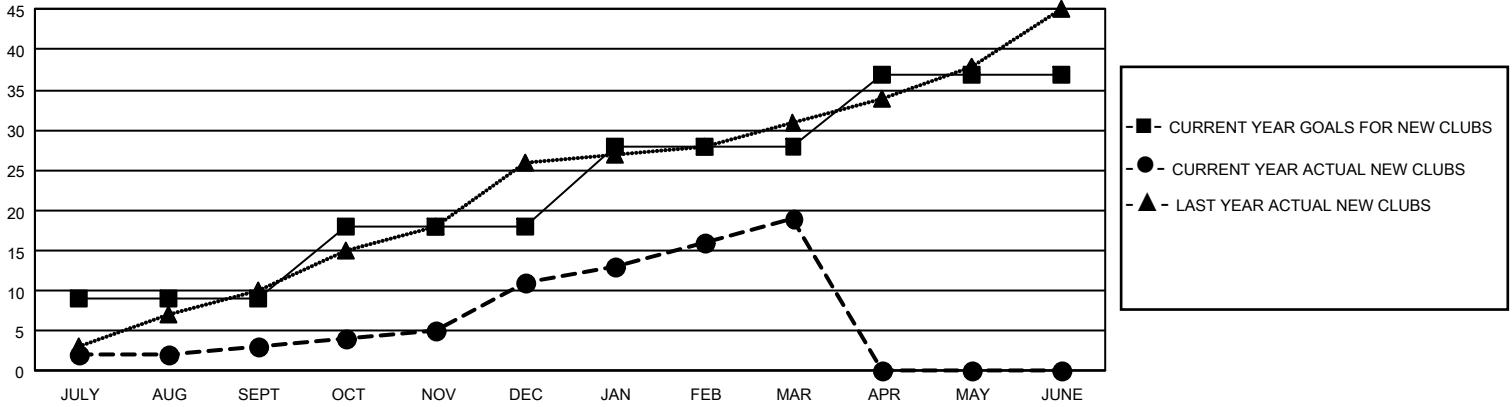
GMT Constitutional Area 3, Group A

REPORT DOES NOT INCLUDE CLUBS IN UNDISTRICTED AREAS.

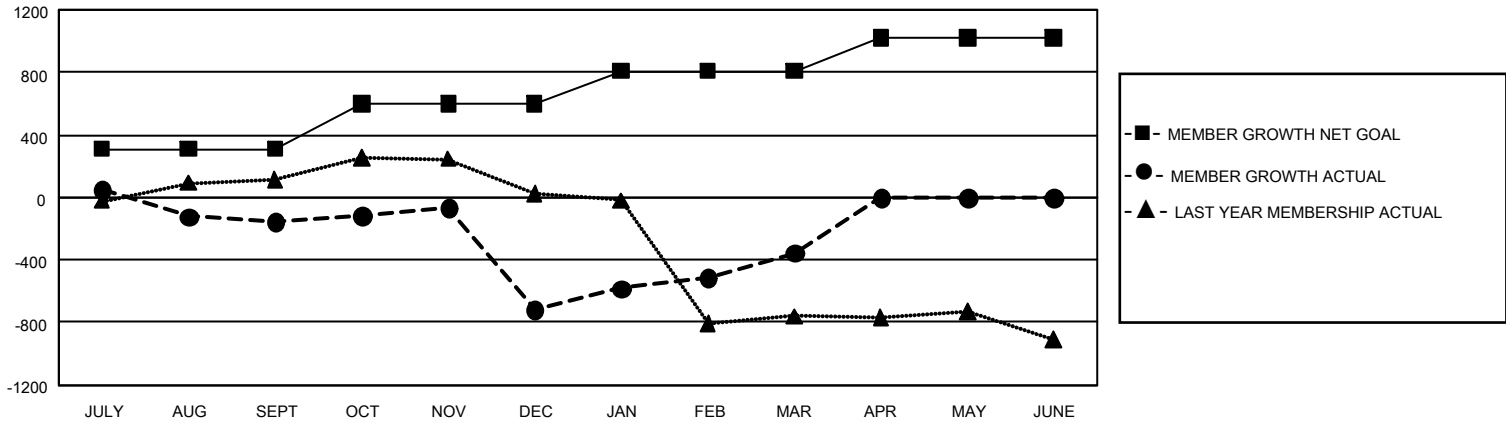
| Clubs | | | |
|-----------------------|---------------|-----------|---------------|
| RESULTS FOR 2021-2022 | | | |
| QUARTER | NEW CLUB GOAL | NEW CLUBS | DROPPED CLUBS |
| JULY/AUG/SEPT | 27 | 3 | 24 |
| OCT/NOV/DEC | 27 | 8 | 31 |
| JAN/FEB/MAR | 30 | 8 | 1 |
| APR/MAY/JUNE | 27 | 0 | 0 |

| Members | | | |
|-----------------------|------------------------|----------------------|--|
| RESULTS FOR 2021-2022 | | | |
| QUARTER | MEMBER GROWTH NET GOAL | MEMBER GROWTH ACTUAL | DROPPED MEMBERS ACTUAL (including transfers) |
| JULY/AUG/SEPT | 310 | 499 | 572 |
| OCT/NOV/DEC | 291 | 459 | 984 |
| JAN/FEB/MAR | 206 | 614 | 170 |
| APR/MAY/JUNE | 212 | 0 | 0 |

GOALS AND ACTUAL NEW CLUBS CUMULATIVE



GOALS AND ACTUAL MEMBERS CUMULATIVE



| | | | |
|--|--|--|---------------------------------|
| DROPPED CLUBS: 56 | 232 CLUBS OF 523 ADDED 1 OR MORE NEW MEMBERS | <u>GENDER DISTRIBUTION</u> | |
| | | MALE 5,588 (53.26%) FEMALE 4,900 (46.70%) NON BINARY 0 (0.00%) PREFER NOT TO ANSWER 4 (0.04%) | |
| <u>DROPPED MEMBERS</u> | | CLICK HERE FOR CUMULATIVE MEMBERSHIP DATA | TOTAL FAMILY UNIT MEMBERS 3,990 |
| DECEASED 80 CLUB CANCELLED 715 OTHER 930 TOTAL 1,725 | FAMILY MEMBERS PAYING HALF DUES 2,409 | | |